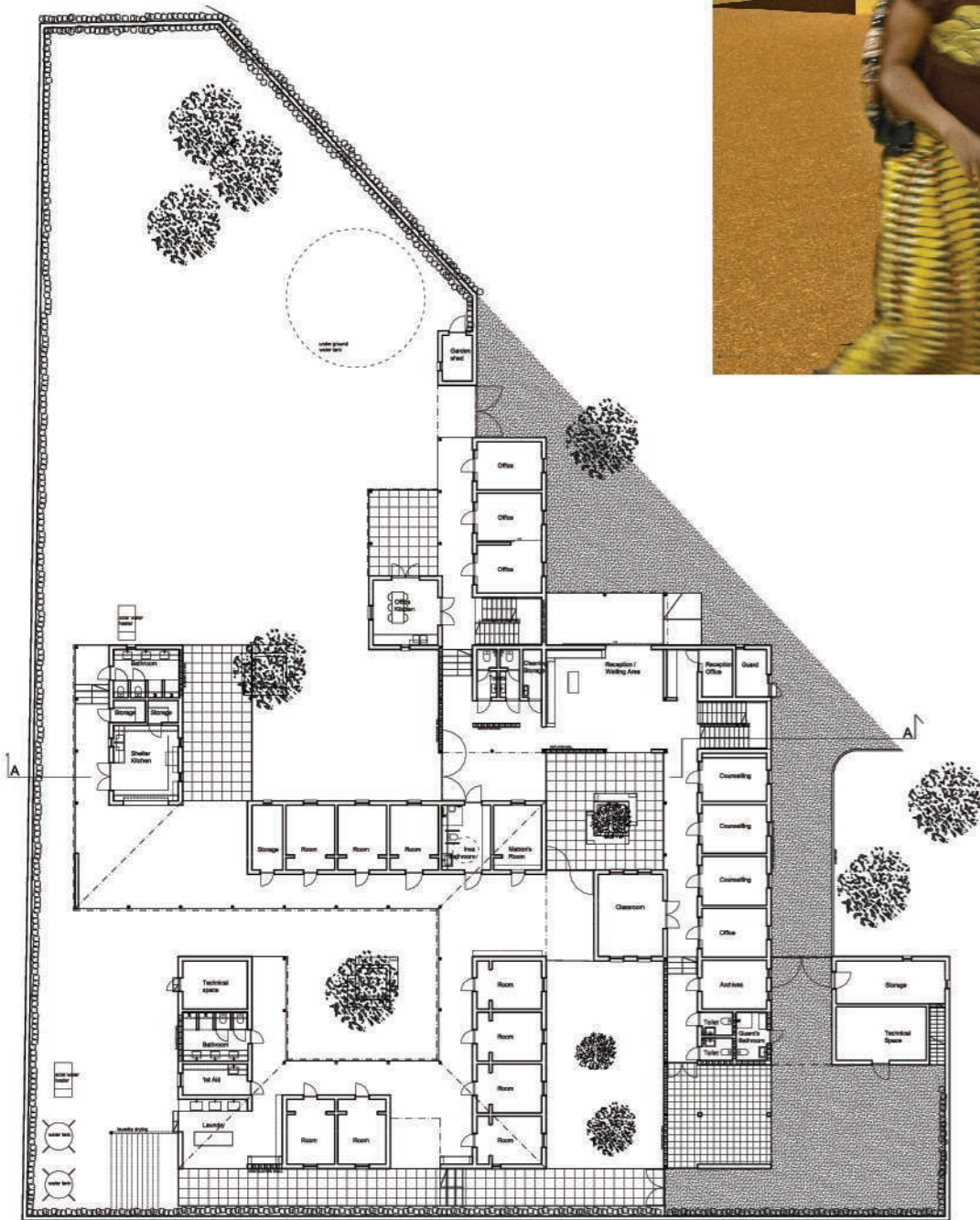


Ground floor plan, scale 1:400



Rendering of the main entrance.

Construction site in March, 2015.



KWIECO Shelter House Moshi, Tanzania

Hollmén Reuter Sandman Architects
Ukumbi NGO

Kilimanjaro Women Information Exchange and Consultancy Organization (KWIECO) was founded in 1987. It provides advice on legal, health, social and economic issues to women. Women in Kilimanjaro are highly vulnerable to violations of their rights to life, liberty and security. Violence against women is permitted by social and cultural attitudes; the law has failed to provide adequate safeguards against violence, nor has it been able to promote attitudes conducive to women's enjoyment of their fundamental rights.

KWIECO has outlined a project to develop the concept of, and eventually found, a Shelter House. Together with Ukumbi NGO, KWIECO introduced the project to the Ministry for Foreign Affairs of Finland, and was awarded funds for setting up the necessary operations and infrastructure for the first phase. The estimated completion time for the construction of the first phase is May 2015. Ukumbi and KWIECO are currently trying to raise funds for the second and final phase.

The architecture of the Shelter House respects local culture and spatial hierarchy. Local materials, renewable energies, local manpower and know-how are used, as well as participatory planning, to ensure that users have a sense of mental ownership in the shelter. The Shelter House will also host new facilities for KWIECO, to ensure and stabilise its operations.

All Hasselt Charter chapters could be applicable in the KWIECO Shelter House project. But we decided to emphasize charter number 1, 5 and 8 in the following three panels.

KWIECO SHELTER HOUSE HOLLMÉN REUTER SANDMAN ARCHITECTS



1



3



4



2



5

KWIECO Shelter House

following Hasselt Charter 1:

1. Cooperate for fair and sustainable development initiatives in active collaboration with disadvantaged people or communities. This process shall follow principles of human solidarity, non-discrimination and will be aimed at promoting their self-sufficiency.

The initiative for the Shelter House came from the president of KWIECO, Elisabeth Minde when meeting Hollmén Reuter Sandman Architects in Moshi in 2007. At that time we were working with another building project in the same town.

KWIECO is a well established organisation that has been working for human rights and legal aid since 1987. The concept of a shelter building has been developed when seeing many victims of domestic violence in KWIECO's everyday consultancy work.

CAPTIONS

1. Working model for the KWIECO Shelter House.

2. Courtyard.
Construction site of phase 1, January 2015.

3. During the design and construction of Phase 1 Ukumbi NGO has funded the rent costs for a temporary shelter, since the need for a safe place to stay is acute.

4. Views through the building.
Construction site of phase 1, January 2015.

5. The temporary shelter has been in use since the Spring of 2014. The furniture has been designed to fit in the final KWIECO shelter building.

KWIECO SHELTER HOUSE

HOLLMÉN REUTER SANDMAN ARCHITECTS

KWIECO Shelter House

following Hasselt Charter 5:

5. Facilitate the use of appropriate technologies, materials and labour adequate to local values, to the cultural specificity and responsive to the natural environment.

The Shelter house is designed with local technologies and building materials as far as possible.

The building has natural ventilation and the warm water is heated with solar heaters.

We collaborate with a local engineer firm, a local architect and a local contractor in the project.

CAPTIONS

1. Recycled wine bottles are cut into two pieces and the bottoms of the bottles are used as glass bricks in the building.
Construction site of phase 1, March 2015.

2. The glass bricks in the facade. Behind the bottle facade you can find the bathrooms.
Construction site of phase 1, March 2015.

3. The doors are clad with local bamboo, a building material which is rarely used in the region. The introduction of this material wasn't evident in the beginning of the design process.

4. The courtyard of the Shelter building creates a calm and intimate space for the persons staying and working in the building.
Construction site of phase 1, March 2015.



1



3



2



4

KWIECO SHELTER HOUSE

HOLLMÉN REUTER SANDMAN ARCHITECTS



KWIECO Shelter House

following Hasselt Charter 8:

8. Support participatory, democratic, multicultural and interdisciplinary processes and approaches in strengthening community solidarity as a factor of rural and urban social development;

The Shelter house is designed in a close collaboration with the KWIECO personnel from the very beginning. We started by analysing the needs together with KWIECO and throughout the process the exchange of ideas has been intense.

CAPTIONS

1. When the plot was bought by KWIECO we had a participatory design workshop where we analysed the plot as well as discussed the coming needs for the shelter and the KWIECO offices and consultancy rooms.
2. There has been many colour samples made throughout the design process. In March 2015 the final yellow colour was mixed together with the different floor colour samples.
3. The main gate to the site will be painted as a local Kanga cloth with the KWIECO logo and slogan embedded into it.

KWIECO SHELTER HOUSE
HOLLMÉN REUTER SANDMAN ARCHITECTS